

# Human CCR2b Protein-VLP

Cat. No. CCR-HM02B

## Description

<b>Source</b>	Recombinant Human CCR2b Protein-VLP is expressed from HEK293. It contains Met1-Leu360.
<b>Accession</b>	P41597-2
<b>Molecular Weight</b>	The target protein has a predicted MW of 42.9kDa.
<b>Endotoxin</b>	Less than 1EU per µg by the LAL method.
<b>Purity</b>	> 95% as determined by HPLC

## Formulation and Storage

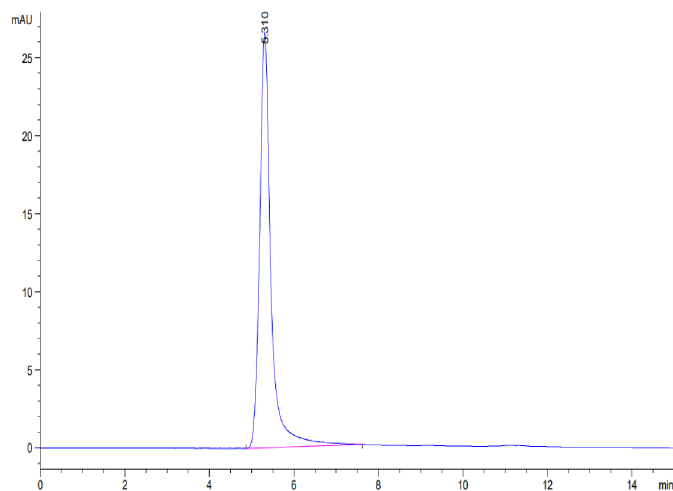
<b>Formulation</b>	Supplied as 0.22µm filtered solution in PBS, 300mM L-Arginine (pH 7.4). Notice: If you need it for immunization, water-soluble adjuvant is recommended.
<b>Storage</b>	Valid for 12 months from date of receipt when stored at -80°C. Recommend to aliquot the protein into smaller quantities for optimal storage. Please minimize freeze-thaw cycles.

## Background

The chemokine (C-C motif) receptor 2B (CCR2B) is one of the two isoforms of the receptor for monocyte chemoattractant protein-1 (CCL2), the major chemoattractant for monocytes, involved in an array of chronic inflammatory diseases. The actin-binding protein filamin A (FLNa) as a protein that associates with the carboxyl-terminal tail of CCR2B. FLNa emerges as an important protein for controlling the internalization and spatial localization of the CCR2B receptor in different dynamic membrane structures.

## Assay Data

### SEC-HPLC



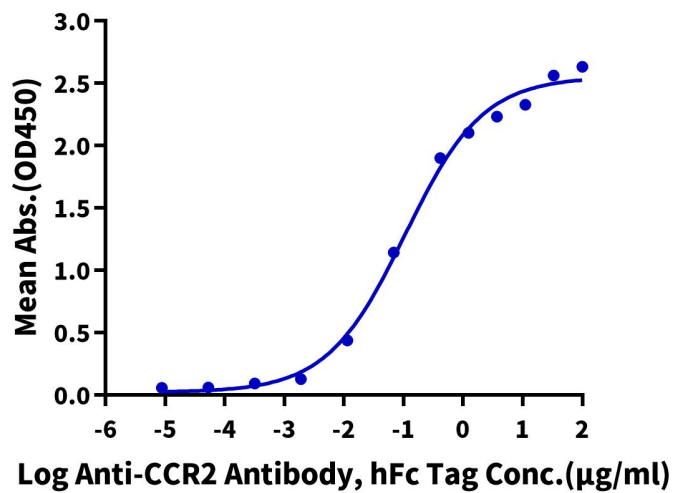
The purity of Human CCR2b VLP is greater than 95% as determined by SEC-HPLC.

### ELISA Data

## Assay Data

**Human CCR2b VLP ELISA**

0.5µg Human CCR2b VLP Per Well



Immobilized Human CCR2b VLP at 5µg/ml (100µl/Well) on the plate. Dose response curve for Anti-CCR2b Antibody, hFc Tag with the EC50 of 0.11µg/ml determined by ELISA.